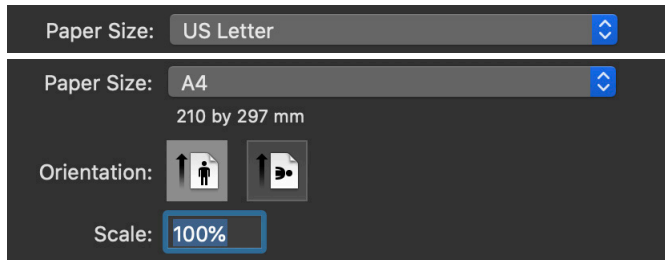




PROJECT PATTERN LEATHER TISSUE HOLDER



Printing Instruction

The pattern is designed to be printable. We took into consideration the standard printer margin for letter and A4 sized papers.

Select "US letter" or "A4" under paper size. Make sure portrait mode is selected.

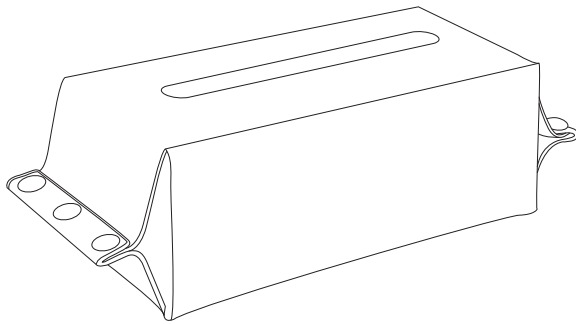
Be sure to click "scale: 100%" to ensure that the page is going to print to scale.

Recommended Leather Weight

1.6mm~2.0mm (4~5oz)


Instruction

1. Print out the pattern on heavy card stock, punch holes and cut out the pattern in leather.
2. Apply edge color with wool dauber, allow to dry.
3. On the base panel, mark the folding area and skive down the thickness.
4. Apply gum tragacanth on the back (rough) side and polish with glass burnisher.
5. Apply leather finish on the front (smooth) side, add decorative groove.
6. Round off the edges using edge beveler and polish with slicker.
7. Fold and hammer the folding line.
8. Install female and male snaps on one side of the base panel.
9. On the opposite side, place cover panel in between the base panel and install rivets.
10. Attach the base and cover using screw posts.
11. Insert tissue and close the opening.
12. Complete.



Tools & material available on www.ivan.tw

LEATHER TISSUE HOLDER

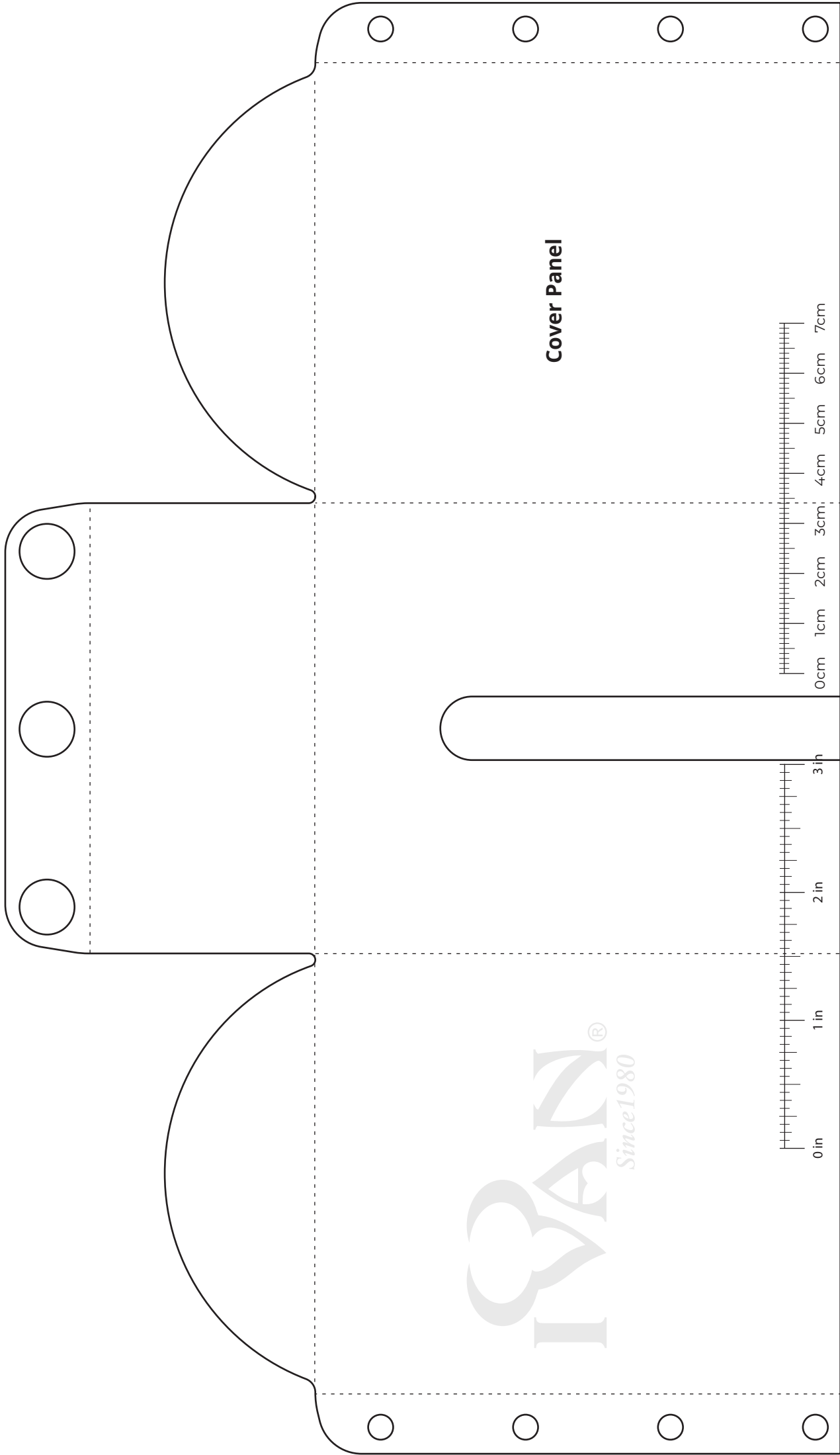
 /ivan.leathercraft

 @ivanleathercraft

Share your projects with us using the hashtag #IVANVIDEOMONDAY & by tagging @ivanleathercraft on Instagram & Facebook

COPYRIGHT © 2021 IVAN LEATHERCRAFT CO., LTD. ALL RIGHTS RESERVED

PRINTABLE TEMPLATE



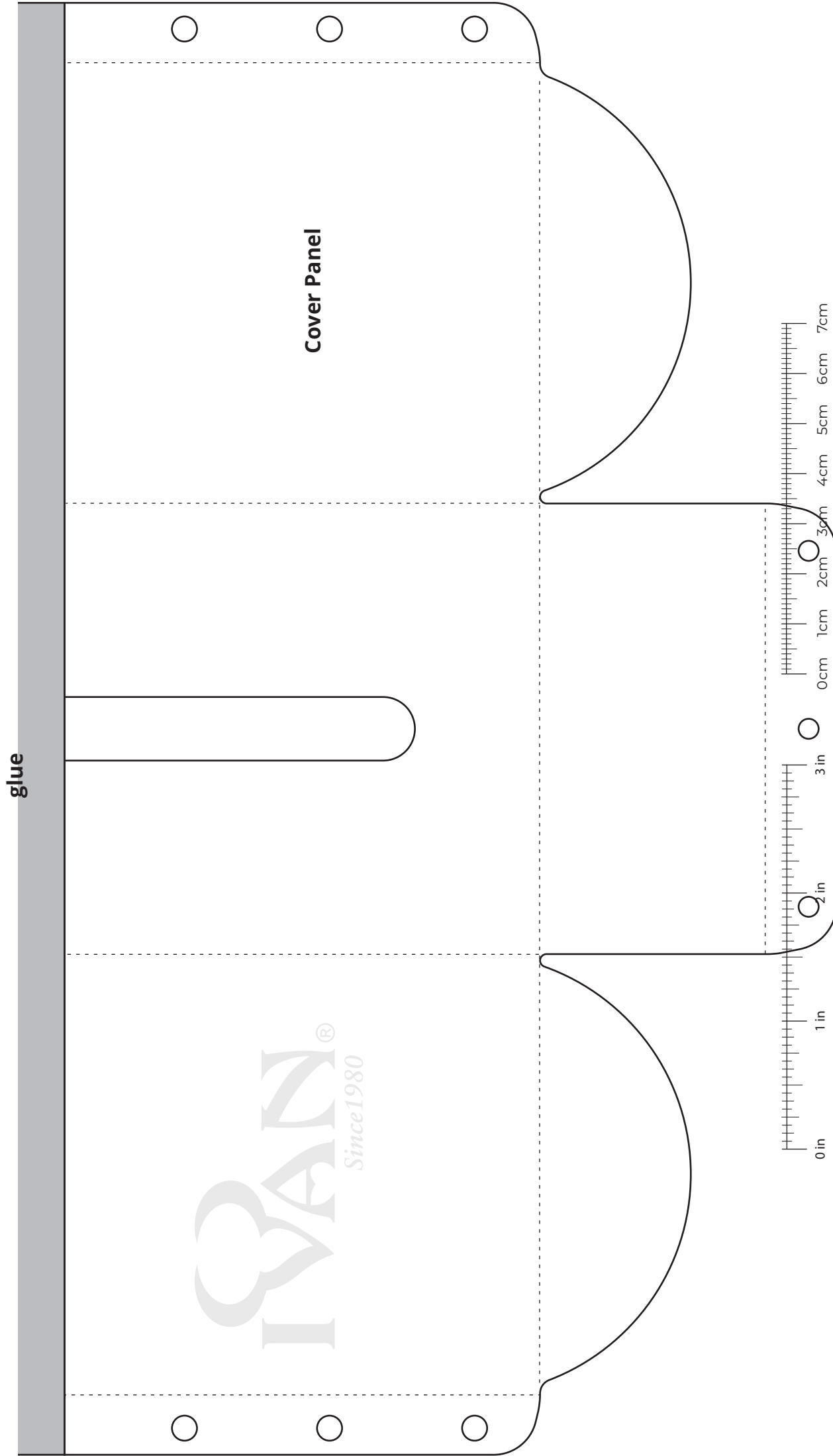
Measure this ruler against you own to make sure the pattern is to scale.

Share your projects with us using the hashtag #IVANVIDEOMONDAY & by tagging @ivanleathercraft on Instagram & Facebook

COPYRIGHT © 2021 IVAN LEATHERCRAFT CO., LTD. ALL RIGHTS RESERVED

LEATHER TISSUE HOLDER

PRINTABLE TEMPLATE

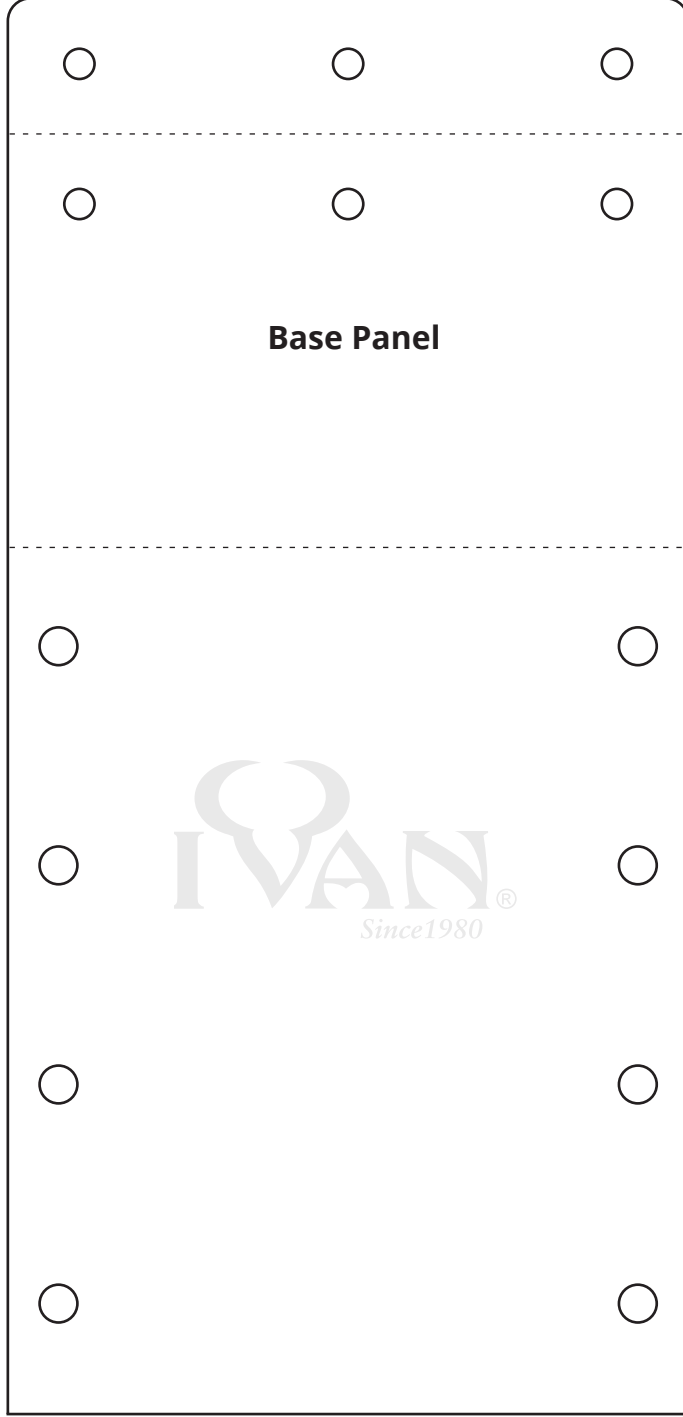


Measure this ruler against you own to make sure the pattern is to scale.

Share your projects with us using the hashtag #IVANVIDEOMONDAY & by tagging @ivanleathercraft on Instagram & Facebook

COPYRIGHT © 2021 IVAN LEATHERCRAFT CO., LTD. ALL RIGHTS RESERVED

LEATHER TISSUE HOLDER

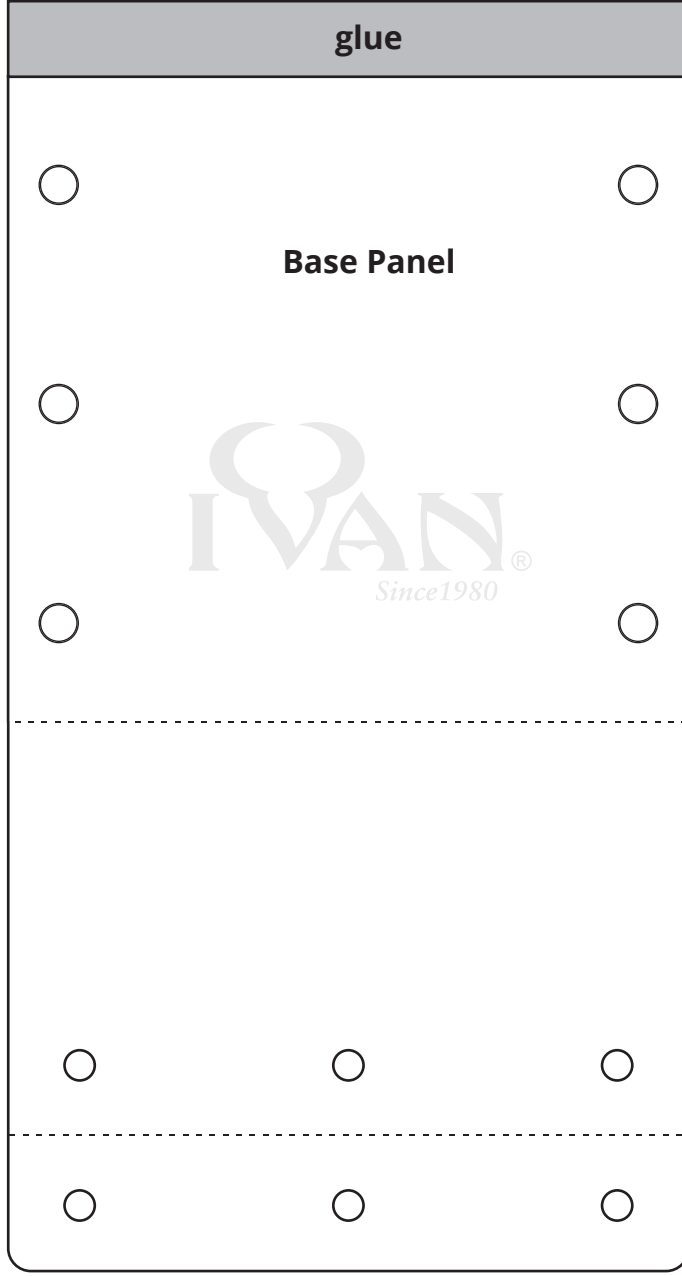


Measure this ruler against you own to make sure the pattern is to scale.

Share your projects with us using the hashtag #IVANVIDEOMONDAY & by tagging @ivanleathercraft on Instagram & Facebook

COPYRIGHT © 2021 IVAN LEATHERCRAFT CO., LTD. ALL RIGHTS RESERVED

LEATHER TISSUE HOLDER



Measure this ruler against you own to make sure the pattern is to scale.

Share your projects with us using the hashtag #IVANVIDEOMONDAY & by tagging @ivanleathercraft on Instagram & Facebook

COPYRIGHT © 2021 IVAN LEATHERCRAFT CO., LTD. ALL RIGHTS RESERVED

LEATHER TISSUE HOLDER